

EntreComp: Keeping enterprise education relevant to students at a time of uncertainty

Thursday 13th May

Syeda Rahimunnessa AFHEA, FEEUK

Senior Student Enterprise Manager
London South Bank University

About Me

- Based in the central LSBU Student Enterprise team
- Support students to explore and set up their business ideas
- Work with academics to embed enterprise activities in the curriculum
- Co-run a research internship programme recruiting and interviewing LSBU students
- Support students to develop entrepreneurial competencies for their business, employment and self-employment
- Support students to understand the relevance of entrepreneurial competencies in their sector and for their future careers and continued professional development
- Ran a pilot project at LSBU using EntreComp across in-curriculum and extra-curricular activities

<https://www.linkedin.com/in/syeda-rahimunnessa/>

About LSBU

7 Schools

School of Applied Science

School of Engineering

School of Health & Social Care

School of Arts & Creative Industries

School of Built Environment & Architecture

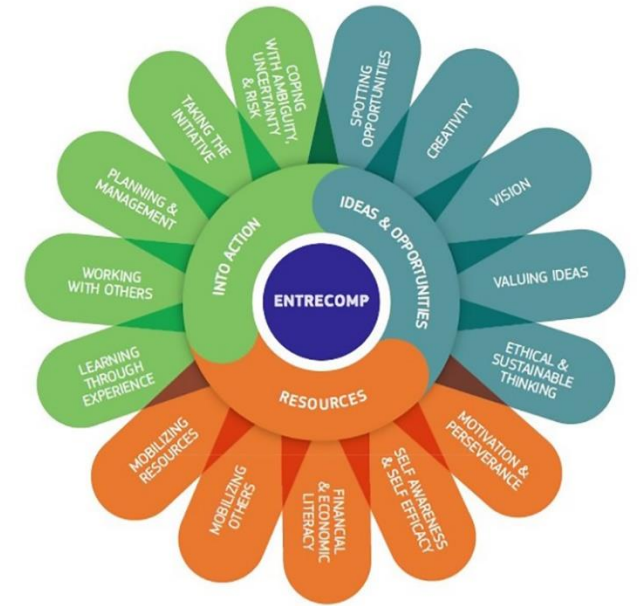
School of Business

School of Law & Social Sciences

The EntreComp Framework

As a learning resource

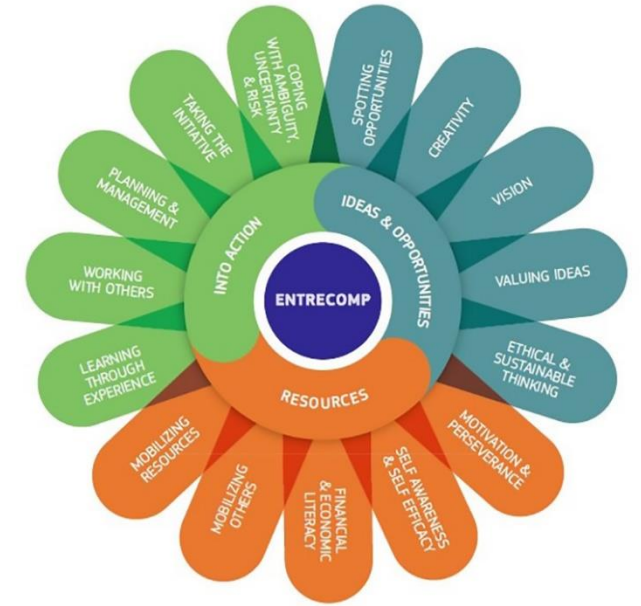
- Used appropriate parts of the EntreComp Framework
- Visual appeal of the flower image for students and academics
- Table 1 of EntreComp consisting of the descriptors for each competence
- Adapted EntreComp for different disciplines and students level of learning
- Used as a resource for reflection about entrepreneurial competencies and greater self-awareness



Using The EntreComp Framework

Key Benefits

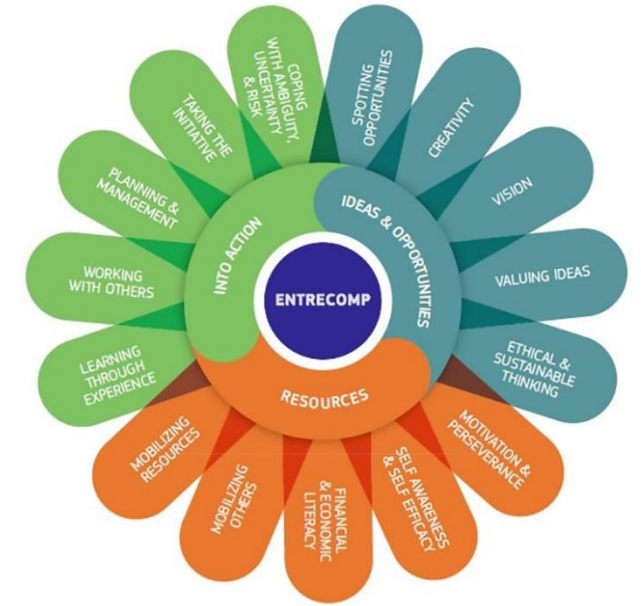
- Supported students to understand their competencies and where they may have gaps
- Supported students to understand and recognise what is meant by 'entrepreneurial' skills
- Supported students to make connections with employment and career preparations particularly at an uncertain and challenging economic time
- Supported students to adopt a flexible and entrepreneurial mind-set to consider available opportunities and new opportunities they may not have previously considered



Using The EntreComp Framework

LSBU Pilot Project Report of Case Studies

- In-curriculum and extra-curricular activities
- Student feedback
- Sample lesson plans
- Sample worksheets



Dropbox Link to Report

<https://www.dropbox.com/s/m493h9djvwz9uc0/2021%20-%20LSBU%20EntreComp%20Full%20Report%20-%20Branded%20-%20PDF%20-%20Jan2021%20%281%29.pdf?dl=0>

LSBU Colleagues

- Dan Barnard, Senior Lecturer, Arts Creative School
<https://www.linkedin.com/in/dan-barnard-he-him-71bab014/>
- Dr Sarah Church, Associate Professor Midwifery, School of Health & Social Care
<https://www.linkedin.com/in/sarah-church-298055120/>



Poll 1

slido.com #852049



**London
South Bank
University**



How well do you know the EntreComp Framework?

 Start presenting to display the poll results on this slide.



Tell us your experience of using EntreComp

 Start presenting to display the poll results on this slide.

slido

If you are not using EntreComp, are there areas of your work where you think you could use it? Tell us your aspirations.

 Start presenting to display the poll results on this slide.

Poll 2

slido.com #852049


slido

My understanding of EntreComp and its possible application has increased.

 Start presenting to display the poll results on this slide.

slido

I am inspired to use EntreComp in my work.

 Start presenting to display the poll results on this slide.

slido

I've gained confidence to use EntreComp in my work.

 Start presenting to display the poll results on this slide.